

LPCG SERIES- Deep cycle GEL

LPCG12-125(12V131AH)

Specification

Nominal Voltage	12V	
Nominal Capacity(20HR)	131.4AH	
Dimension	Length	345±3mm (13.58 inches)
	Width	172±2mm (6.77 inches)
	Container Height	274±3mm (10.79 inches)
	Total Height (with Terminal)	280±3mm (11.02 inches)
Approx Weight	Approx 47.3 kg (104.3lbs)	
Terminal	T11	
Container Material	ABS	
Rated Capacity	131.4 AH/6.57A	(20hr ,1.80V/cell,25°C/77°F)
	120.0AH/12.0A	(10hr,1.80V/cell,25°C/77°F)
	105.0 AH/21.0A	(5hr,1.75V/cell,25°C/77°F)
	91.5 AH/30.5A	(3hr,1.75V/cell,25°C/77°F)
	76.7 AH/76.7A	(1hr,1.60V/cell,25°C/77°F)
Max. Discharge Current	1170A (5s)	
Internal Resistance	Approx 4.5mΩ	
Operating Temp.Range	Discharge : -20~55°C (-4~131°F)	
	Charge : 0~40°C (32~104°F)	
	Storage : -20~50°C (-4~122°F)	
Nominal Operating Temp. Range	25±3°C (77±5°F)	
Cycle Use	Initial Charging Current less than 26.2A.Voltage	
	14.4V~15.0V at 25°C(77°F)Temp. Coefficient -30mV/°C	
Standby Use	No limit on Initial Charging Current Voltage	
	13.5V~13.8V at 25°C(77°F)Temp. Coefficient -20mV/°C	
Capacity affected by Temperature	40°C (104°F)	103%
	25°C (77°F)	100%
	0°C (32°F)	86%
Self Discharge	LPCG series batteries may be stored for up to 9 months at 25°C(77°F) and then a freshening charge is required. For higher temperatures the time interval will be shorter.	



Typical Applications

- ◆ Railway and marine systems
- ◆ Electric tools
- ◆ Vehicle in place of walking
- ◆ Lawn mowers
- ◆ Golf trolleys and golfcart
- ◆ Electric toys
- ◆ Portable power
- ◆ Wheelchairs
- ◆ Medical equipments.



Constant Current Discharge (Amperes) at 25 °C (77°F)

F.V/Time	10min	15min	20min	30min	45min	1h	2h	3h	4h	5h	6h	8h	10h	20h
1.85V/cell	144.8	124.5	111.1	87.2	66.6	55.7	35.4	27.0	22.3	19.3	16.6	13.2	11.4	6.30
1.80V/cell	173.9	144.9	127.3	97.5	73.3	61.4	38.2	28.9	23.6	20.2	17.5	13.9	12.0	6.57
1.75V/cell	201.7	164.9	143.0	107.2	79.3	65.8	40.5	30.5	24.7	21.0	18.1	14.3	12.2	6.70
1.70V/cell	224.0	179.5	154.0	114.7	84.2	69.6	42.9	31.7	25.6	21.7	18.7	14.7	12.5	6.78
1.67V/cell	239.9	188.7	160.3	119.2	87.2	72.2	44.0	32.7	26.2	22.1	19.0	15.0	12.6	6.85
1.60V/cell	261.5	203.0	173.7	127.7	93.6	76.7	45.9	34.0	27.2	22.8	19.5	15.3	12.9	6.95

Constant Power Discharge (Watts/cell) at 25 °C (77°F)

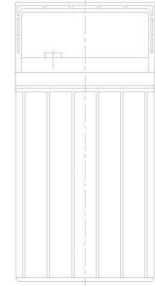
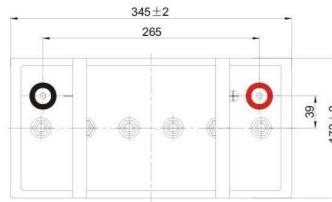
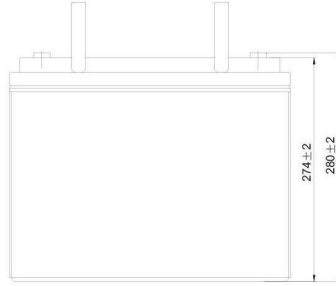
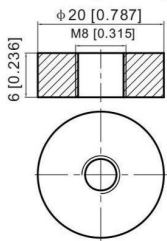
F.V/Time	10min	15min	20min	30min	45min	1h	2h	3h	4h	5h	6h	8h	10h	20h
1.85V/cell	271.9	237.4	212.6	168.0	129.0	108.4	69.0	52.7	43.8	38.0	32.9	26.4	22.8	12.6
1.80V/cell	321.9	270.1	240.4	185.9	141.2	119.0	74.3	56.3	46.3	39.8	34.4	27.6	23.8	13.1
1.75V/cell	367.6	304.0	267.1	202.7	151.6	126.8	78.6	59.4	48.4	41.2	35.6	28.4	24.2	13.3
1.70V/cell	402.4	327.6	284.6	215.1	159.8	133.3	82.8	61.6	49.8	42.3	36.7	29.2	24.8	13.5
1.67V/cell	426.2	340.4	292.9	221.2	164.3	137.6	84.5	63.3	50.9	43.1	37.2	29.6	25.0	13.6
1.60V/cell	456.0	359.0	313.9	234.5	175.1	145.3	87.6	65.5	52.6	44.3	38.0	30.0	25.6	13.7



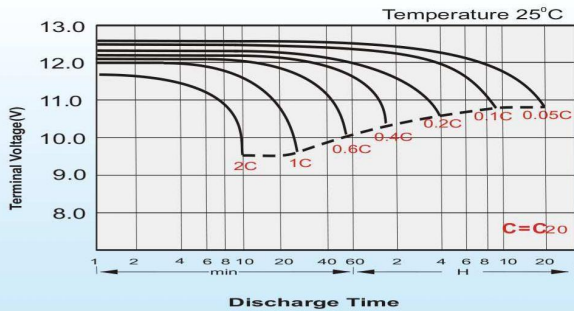
Dimensions

T11 Terminal

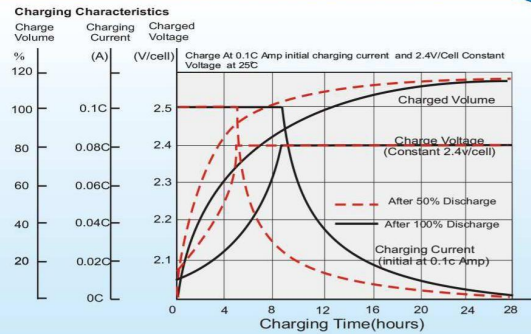
Unit: mm [inches]



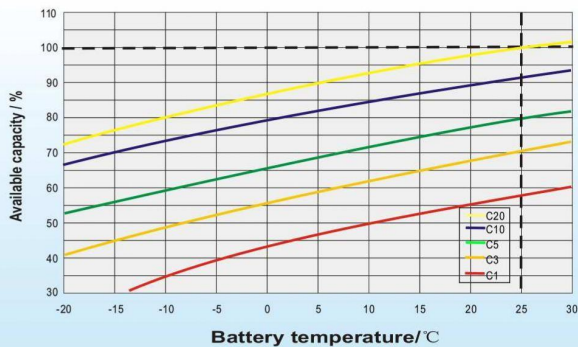
Discharge Characteristics



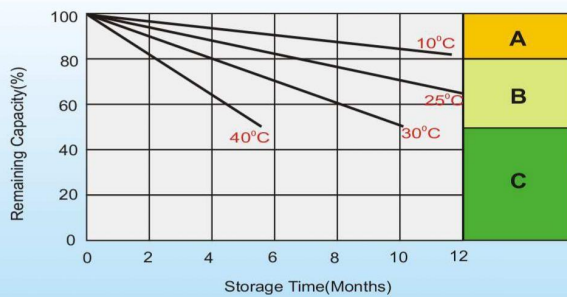
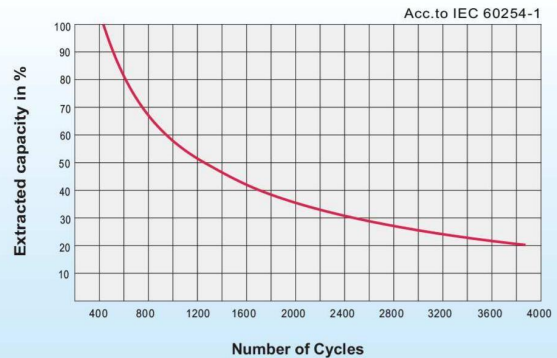
Charging Characteristics (cycle use)



Temperature Effects in Relation to Battery Capacity



Cycle Life in Relation to Depth of Discharge



Self Discharge Characteristics

- A** No supplementary charge required
(Carry out supplementary charge before use if 100% capacity is required.)
- B** Supplementary charge required before use. Optional charging way as below:
 1. Charged for above 3 days at limited current 0.25CA and constant volatge 2.25V/cell.
 2. Charged for above 20hours at limited current 0.25CA and constant volatge 2.45V/cell.
 3. Charged for 8~10hours at limited current 0.05CA .
- C** Supplementary charge may often fail to recover the capacity.
The battery should never be left standing till this is reached.