

LPCG SERIES- Deep cycle GEL

LPCG12-200(12V200AH)

Specification

Nominal Voltage	12V	
Nominal Capacity(20HR)	202.0AH	
Dimension	Length	522±3mm (20.55 inches)
	Width	240±3mm (9.45 inches)
	Container Height	218±3mm (8.58 inches)
	Total Height (with Terminal)	224±3mm (8.81 inches)
Approx Weight	Approx 62.9 kg (138.7lbs)	
Terminal	T11	
Container Material	ABS	
Rated Capacity	202.0 AH/10.1A	(20hr ,1.80V/cell,25°C/77°F)
	184.0 AH/18.4A	(10hr,1.80V/cell,25°C/77°F)
	161.5 AH/32.3A	(5hr,1.75V/cell,25°C/77°F)
	140.7 AH/46.9A	(3hr,1.75V/cell,25°C/77°F)
	118.0 AH/118.0A	(1hr,1.60V/cell,25°C/77°F)
Max. Discharge Current	1800A (5s)	
Internal Resistance	Approx 3.24mΩ	
Operating Temp.Range	Discharge : -20~55°C (-4~131°F)	
	Charge : 0~40°C (32~104°F)	
	Storage : -20~50°C (-4~122°F)	
Nominal Operating Temp. Range	25±3°C (77±5°F)	
Cycle Use	Initial Charging Current less than 40.0A.Voltage	
	14.4V~15.0V at 25°C(77°F)Temp. Coefficient -30mV/°C	
Standby Use	No limit on Initial Charging Current Voltage	
	13.5V~13.8V at 25°C(77°F)Temp. Coefficient -20mV/°C	
Capacity affected by Temperature	40°C (104°F)	103%
	25°C (77°F)	100%
	0°C (32°F)	86%
Self Discharge	LPCG series batteries may be stored for up to 9 months at 25°C(77°F) and then a freshening charge is required. For higher temperatures the time interval will be shorter.	



Typical Applications

- ◆ Railway and marine systems
- ◆ *Electric tools*
- ◆ *Vehicle in place of walking*
- ◆ *Lawn mowers*
- ◆ *Golf trolleys and golfcart*
- ◆ *Electric toys*
- ◆ *Portable power*
- ◆ *Wheelchairs*
- ◆ *Medical equipments.*



Constant Current Discharge (Amperes) at 25 °C (77°F)

F.V/Time	10min	15min	20min	30min	45min	1h	2h	3h	4h	5h	6h	8h	10h	20h
1.85V/cell	217.5	188.4	170.9	134.1	102.3	85.6	54.3	41.4	34.3	29.6	25.6	20.4	17.7	9.70
1.80V/cell	261.3	217.8	195.7	149.9	112.8	94.5	58.8	44.3	36.4	31.1	26.9	21.4	18.4	10.1
1.75V/cell	303.1	247.8	220.0	164.8	122.0	101.2	62.3	46.9	38.1	32.3	27.8	22.1	18.8	10.3
1.70V/cell	336.6	269.8	236.9	176.5	129.6	107.1	66.1	48.8	39.4	33.3	28.8	22.7	19.2	10.4
1.67V/cell	360.5	283.5	246.6	183.4	134.1	111.1	67.8	50.4	40.3	34.0	29.2	23.1	19.5	10.5
1.60V/cell	393.0	303.3	267.2	196.3	144.1	118.0	70.5	52.4	41.8	35.0	29.9	23.5	19.8	10.7

Constant Power Discharge (Watts/cell) at 25 °C (77°F)

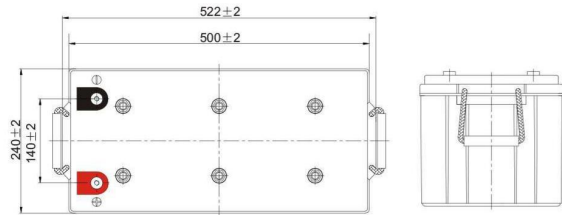
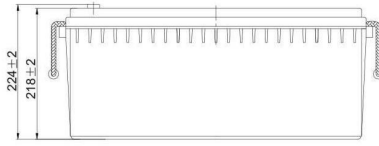
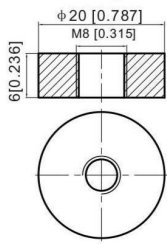
F.V/Time	10min	15min	20min	30min	45min	1h	2h	3h	4h	5h	6h	8h	10h	20h
1.85V/cell	408.7	356.7	327.0	258.5	198.5	166.8	106.2	81.1	67.5	58.5	50.6	40.6	35.1	19.4
1.80V/cell	483.7	405.9	369.8	286.1	217.3	183.1	114.4	86.7	71.2	61.2	52.9	42.4	36.7	20.1
1.75V/cell	552.5	456.8	411.0	311.8	233.1	195.0	120.8	91.3	74.3	63.3	54.6	43.7	37.4	20.5
1.70V/cell	604.7	492.3	437.8	331.1	245.7	205.1	127.5	94.8	76.7	65.1	56.5	44.9	38.2	20.7
1.67V/cell	640.5	511.5	450.7	340.4	252.7	211.7	130.1	97.4	78.3	66.4	57.3	45.6	38.6	20.9
1.60V/cell	685.3	539.6	482.9	360.9	269.5	223.5	134.7	100.8	81.0	68.2	58.4	46.3	39.3	21.2



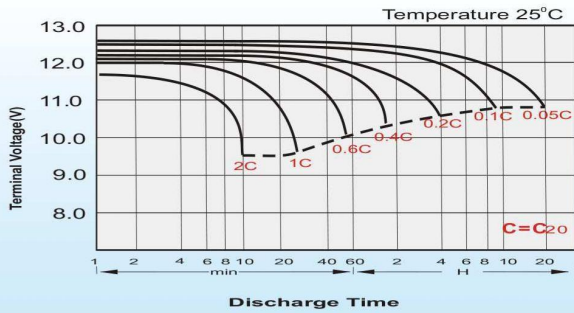
Dimensions

T11 Terminal

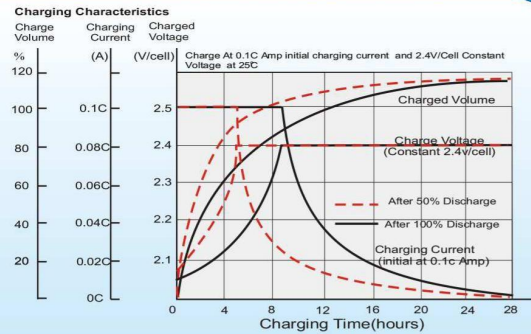
Unit: mm [inches]



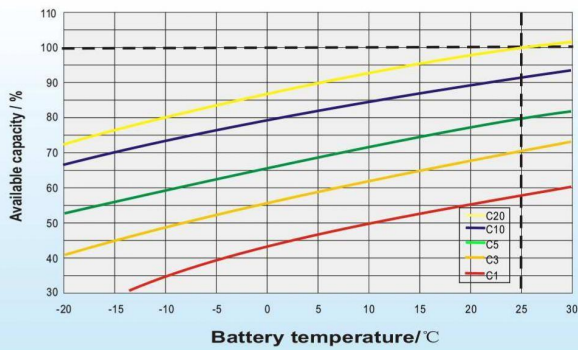
Discharge Characteristics



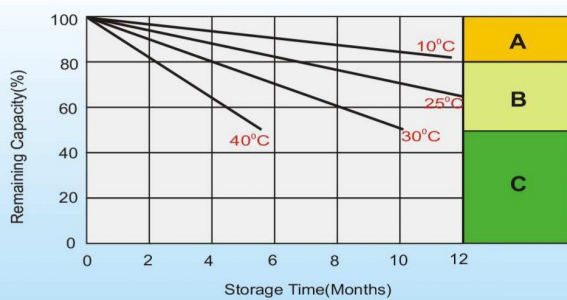
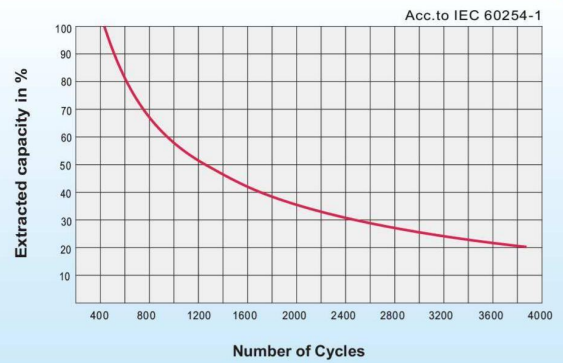
Charging Characteristics (cycle use)



Temperature Effects in Relation to Battery Capacity



Cycle Life in Relation to Depth of Discharge



Self Discharge Characteristics

- A** No supplementary charge required
(Carry out supplementary charge before use if 100% capacity is required.)
- B** Supplementary charge required before use. Optional charging way as below:
 1. Charged for above 3 days at limited current 0.25CA and constant volatge 2.25V/cell.
 2. Charged for above 20hours at limited current 0.25CA and constant volatge 2.45V/cell.
 3. Charged for 8~10hours at limited current 0.05CA .
- C** Supplementary charge may often fail to recover the capacity.
The battery should never be left standing till this is reached.